

Trombone/Euph **Grand Master Scale (major)**

Bb

Eb

Ab

Db

Gb

Cb

E

A

D

G

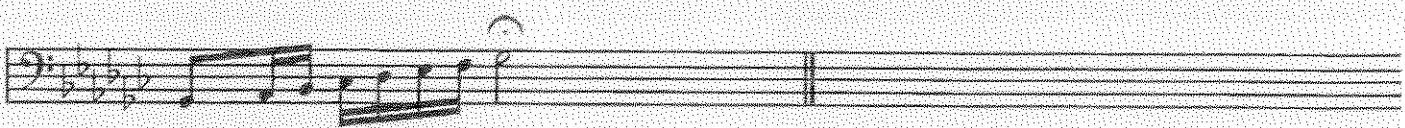
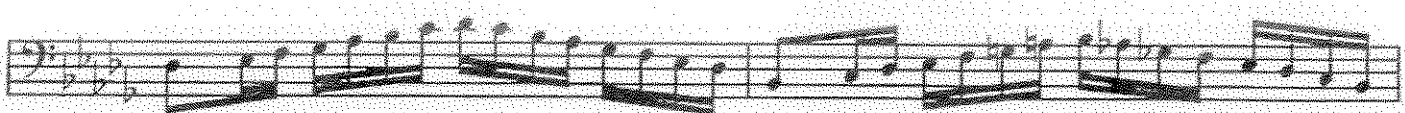
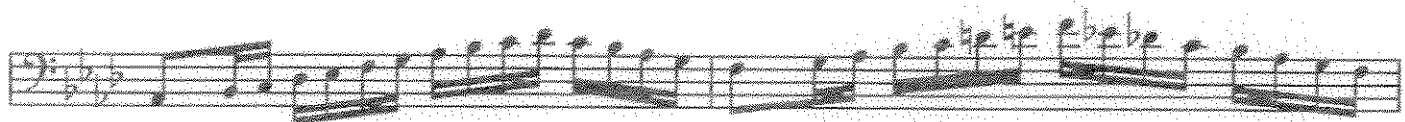
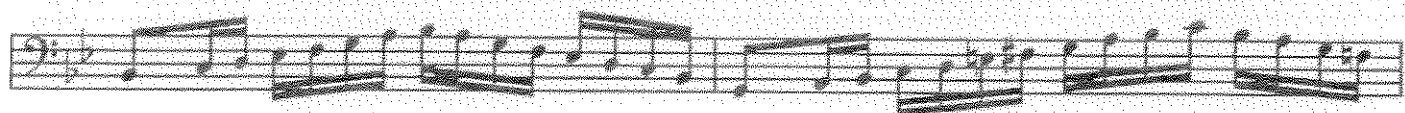
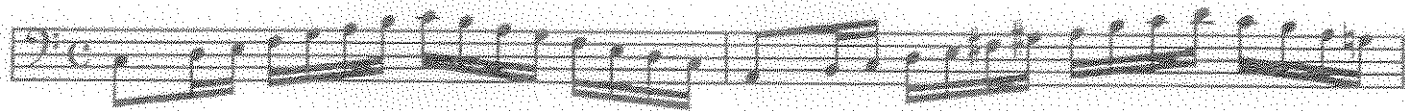
C

F

Bb

L.M.E.A. JUNIOR H.S. AUDITION SCALES

Bassoon, Trombone & Euphonium B.C.



IMEA Senior HS Band Audition Scales

Rev 7/2011

Bassoon, Trombone & Euphonium B.C.

The image displays 12 musical staves, each containing a scale exercise in bass clef with a 4/4 time signature. The scales progress through various key signatures: 1. B-flat major (one flat), 2. E-flat major (three flats), 3. A-flat major (four flats), 4. D-flat major (five flats), 5. G-flat major (six flats), 6. C-flat major (seven flats), 7. F major (no sharps or flats), 8. C major (no sharps or flats), 9. G major (one sharp), 10. D major (two sharps), 11. A major (three sharps), and 12. E major (four sharps). Each staff contains a sequence of eighth and sixteenth notes, with some measures featuring beamed sixteenth notes for technical challenge.

Baritone B. C.

Chromatic Scales

Practical Ranges

The image displays 12 musical staves, each representing a different key signature for chromatic scales. The keys are C, C#/D, D, D#/E, E, F, F#/G, G, G#/A, A, A#/B, and B. Each staff shows a sequence of notes with accidentals, demonstrating the chromatic scale in that key. The notes are written in a bass clef, and the scales are presented in a single line for each key.