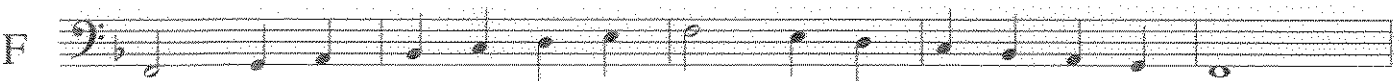
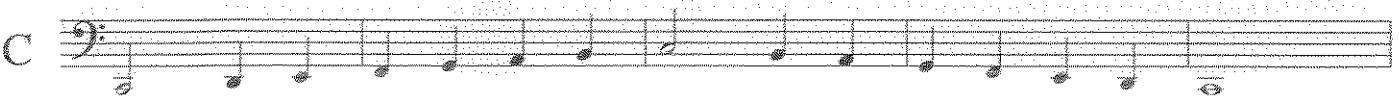
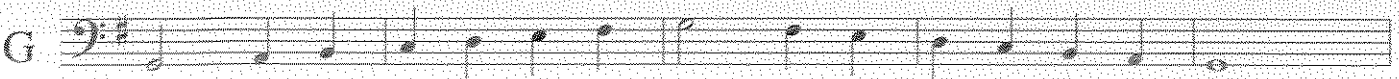
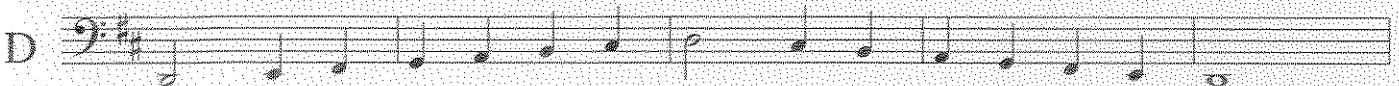
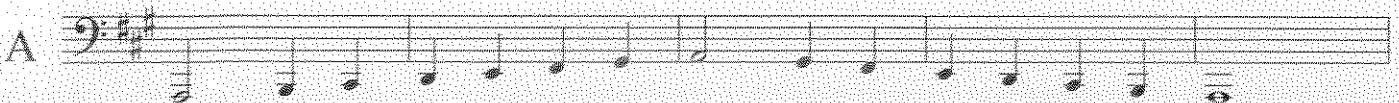
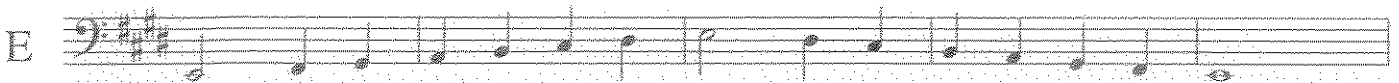
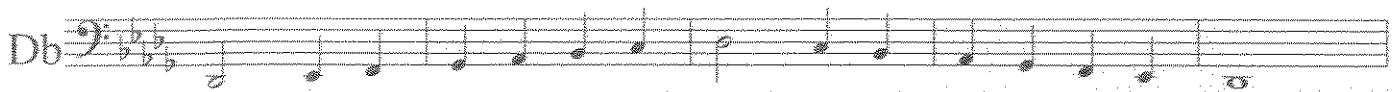
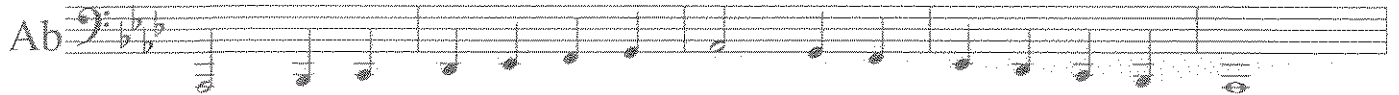
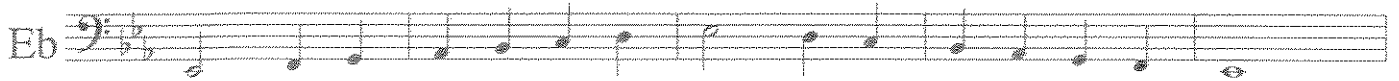


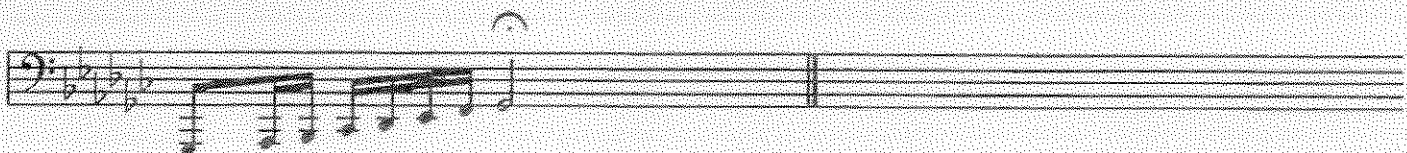
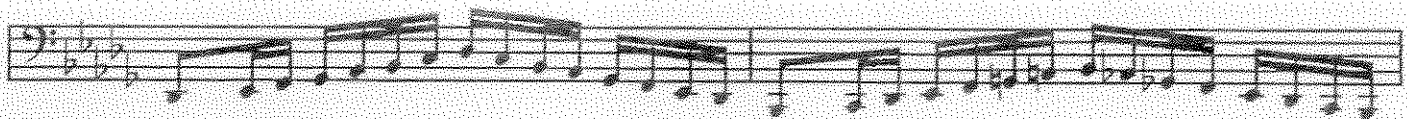
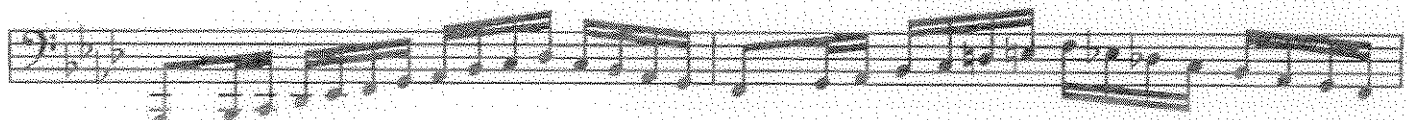
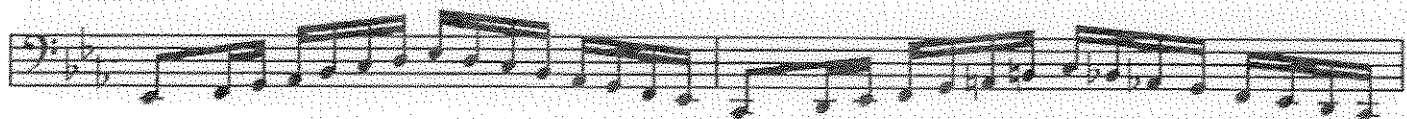
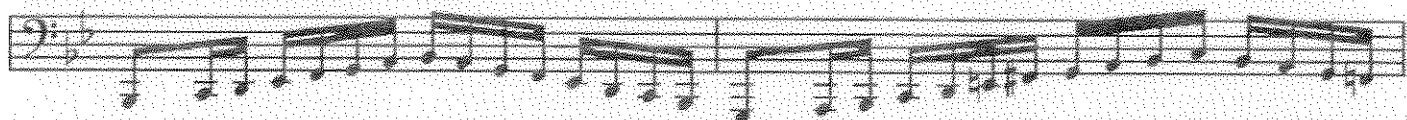
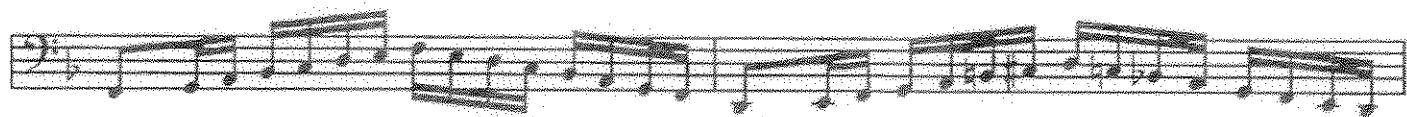
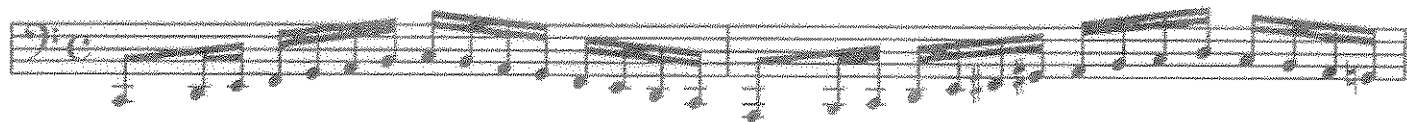
Tuba

Grand Master Scale (major)



I.M.E.A. JUNIOR H.S. AUDITION SCALES

Tuba



IMEA Senior HS Band Audition Scales

Rev 7/2011

Tuba

The image displays a musical score for Tuba audition scales. It consists of 11 staves of music, each representing a different key signature. The time signature is 4/4. The scales are written in bass clef and include various rhythmic patterns and accidentals. The keys, from top to bottom, are: 1. B-flat major (one flat), 2. B-flat major (one flat), 3. B-flat major (one flat), 4. B-flat major (one flat), 5. B-flat major (one flat), 6. B-flat major (one flat), 7. B-flat major (one flat), 8. B-flat major (one flat), 9. B-flat major (one flat), 10. B-flat major (one flat), and 11. B-flat major (one flat). Each staff contains a sequence of notes and rests, with some notes marked with accidentals (sharps, flats, and naturals) to indicate specific intervals and chromaticism. The notation includes stems, beams, and various note heads, with some notes beamed together in groups of four or eight.

Tuba

Chromatic Scales

Practical Ranges

The image displays 12 musical staves, each representing a chromatic scale for a specific key signature. The staves are labeled as follows from top to bottom: C, C#/D, D, D#/E, E, F, F#/G, G, A, A#/B, and B. Each staff begins with a bass clef and a common time signature. The notes are written in a sequence that ascends chromatically and then descends chromatically. For example, the C scale starts on middle C and goes up to C5, while the B scale starts on B2 and goes up to B4. The notation includes various accidentals (sharps, flats, naturals) to indicate the correct pitch for each note in the scale.